

Solar Bus Kit

SONO  MOTORS

Saves up to
1250 l Diesel
and **3,3 t CO₂** or
2,1 MWh power
earnings per
bus per year



Equipment of Diesel, Hybrid and e-Buses



Available on 3 standard sizes for City, Coach and Mini buses



Unique architecture makes it the most efficient solution in the market



Direct supply of electrical consumers and battery discharge protection

**Kit size customization is possible upon request*

SYSTEM BENEFITS IN A NUTSHELL

Cost savings

- From fuel or electricity for boardnet consumers
- From maintenance and replacement of 24V batteries



Comfort

- Power for ventilation, fridge, coffee machine, etc., with engine off
- Reduced noise and vibration
- Boosts battery reliability



Sustainability

- Diesel and CO₂ savings
- Enhanced battery life
- Power generated where it's needed
- Reduction of emissions in cities and for travel use



Marketing

- Public attention through innovative technology
- Sustainable public transport and environmentally friendly travel - a clear competitive advantage



FEATURES AND INCLUDED COMPONENTS



Up to 1,4 kWp of power through high-efficiency, flexible SILICON SOLAR PANELS (up to 16) deliver cost-free green energy.



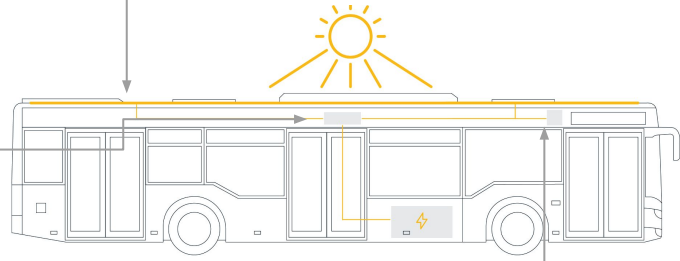
SOLAR CHARGE CONTROLLER with 8 channels developed by Sono Motors efficiently delivers solar energy to the 24V vehicle battery, directly powering bordnet electric consumers.



TELEMATIC DEVICE delivers performance data, including solar output and battery health, displayed by a **DATA DASHBOARD** available on mobile and laptop.



CABLING from solar panels to the 24V vehicle battery, including all necessary **INSTALLATION MATERIAL**.



INSTALLATION by customer or through Sono Motors expert Service-partner Network



WHY SONO MOTORS KITS?

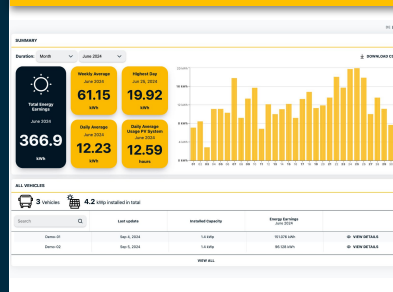
- Sono systems achieve the highest solar yield through multichannel MPPT* architecture and parallel connection
- Sono charge controller responds most efficiently to rapidly changing sunlight
- Sono charging algorithm delivers power to the onboard grid and battery with outstanding efficiency
- Safe low voltage (<60V) across all states; no high-voltage certification needed
- Small module sizes enable flexible compatibility with different roof layouts
- System weight lower than 55 kg
- ECE R 10 compatible
- Fast installation time
- System performance guarantee of >80% after 10 years.

Installation on Mercedes Citaro C2



Data Dashboard

Charge controller under the roof



CONTACT

Dominic Mayer
Head of Sales and Marketing
E dominic.mayer@sonomotors.com
P +49 157 80542777



*Maximum Power Point Tracking